

Technical details

| | |
|--------------------------|---|
| Temperature range | -10°C ... +70°C |
| Medium | Filtered, oil-free and dried compressed air according to ISO 8573-1:2010, Class 7:2:4, instrument air, free of aggressive additives. Alternatively the pressure dew point must be at least 10°C below lowest occurring ambient temperature. |
| Materials | Body: Al (anodized), seals: NBR |
| Protection | IP 65 according to EN 60529 |



Manifold system with integrated electrical connection including LED, manual override and built-in circuit protection.

Double solenoid valves and 5/3-way valves require 2 stations on the manifold.

The above order code covers only the manifold. The valves and the multi-pin plug with cable must be ordered separately.

The valve terminal is delivered pre-assembled and function-tested. If not specified with the order, valve configuration is as follows: Valves are mounted according to their order number, starting with high numbers on the side of the multi-pin, ending with low numbers on the opposite side, followed by blind plates (if ordered).

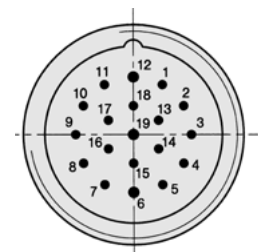
Order code

| | | | |
|---------------------------|-------------|---------------------------|--|
| Series | | Electrical options | |
| RE-04/**-* | | M Multi-pin | |
| Number of stations | | | |
| 04 | 4 stations | | |
| 06 | 6 stations | | |
| 08 | 8 stations | | |
| 10 | 10 stations | | |
| 12 | 12 stations | | |
| 14 | 14 stations | | |
| 16 | 16 stations | | |

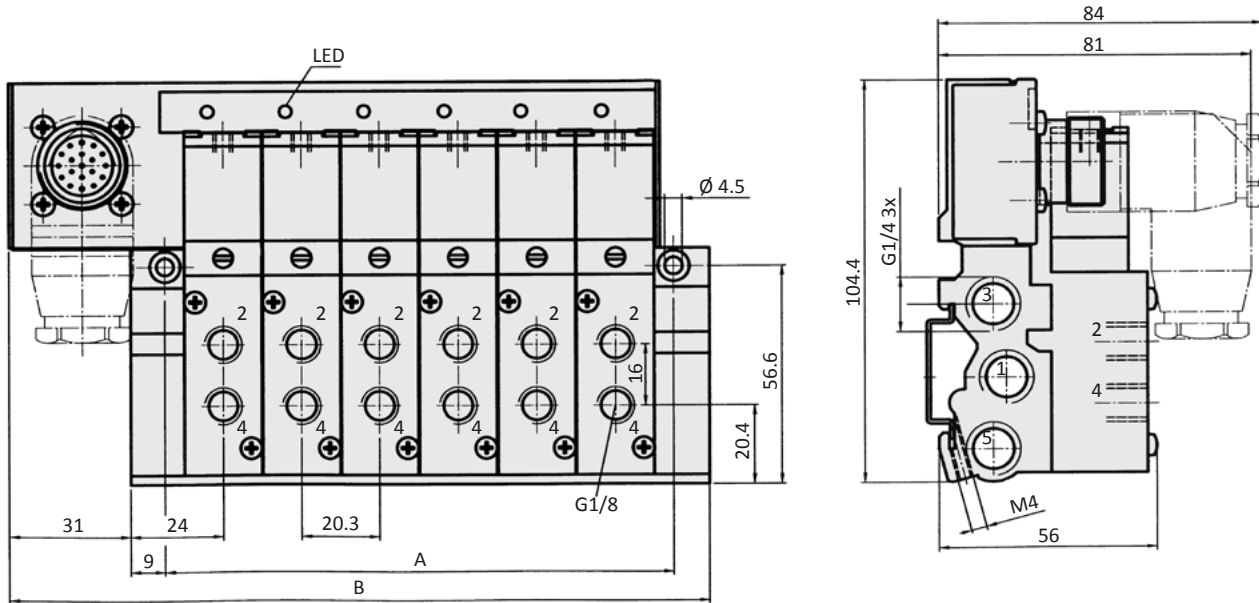
Electrical options
Multi-pin

The 19-pin multi plug (see page 7-04) has to be ordered separately.

| Pin | Function | Cable, 8-pin | Cable, 16-pin | Pin | Function | Cable, 8-pin | Cable, 16-pin |
|-----|----------|--------------|---------------|-----|----------|---------------|---------------|
| 1 | valve 1 | black 1 | black 1 | 11 | valve 10 | - | black 10 |
| 2 | valve 2 | black 2 | black 2 | 12 | PE | green/ yellow | green/ yellow |
| 3 | valve 3 | black 3 | black 3 | 13 | valve 11 | - | black 11 |
| 4 | valve 4 | black 4 | black 4 | 14 | valve 12 | - | black 12 |
| 5 | valve 5 | black 5 | black 5 | 15 | valve 13 | - | black 13 |
| 6 | GND | black 9 | black 9 | 16 | valve 14 | - | black 14 |
| 7 | valve 6 | black 6 | black 6 | 17 | valve 15 | - | black 15 |
| 8 | valve 7 | black 7 | black 7 | 18 | valve 16 | - | black 16 |
| 9 | valve 8 | black 8 | black 8 | 19 | GND | - | black 18 |
| 10 | valve 9 | - | black 17 | | | | |



Dimensions



- 1 = pressure inlet
- 2,4 = outlets
- 3,5 = exhausts

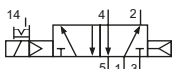
| Model-no.: | A | B | Weight without valves (kg) |
|------------|-------|-------|----------------------------|
| RE-04/04-M | 90.9 | 140 | 0.51 |
| RE-04/06-M | 131.5 | 180.6 | 0.72 |
| RE-04/08-M | 172.1 | 221.2 | 0.93 |
| RE-04/10-M | 212.7 | 261.8 | 1.14 |
| RE-04/12-M | 253.3 | 302.4 | 1.35 |
| RE-04/14-M | 293.9 | 343 | 1.56 |
| RE-04/16-M | 334.5 | 383.6 | 1.77 |

Technical details

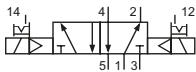
| | |
|--------------------------|---|
| Outlets | G1/8 |
| Nominal size | 4 mm |
| Temperature range | -10°C ... +70°C |
| Medium | Filtered, oil-free and dried compressed air according to ISO 8573-1:2010, Class 7:2:4, instrument air, free of aggressive additives. Alternatively the pressure dew point must be at least 10°C below lowest occurring ambient temperature. |
| Materials | Body: Al (anodized), plastic, seals: NBR and POM, inner parts: Al, stainless steel and brass |
| Nominal voltage | 24 V DC, ± 10% |
| Power consumption | 2 W |
| Protection | IP 65 according to EN 60529 |



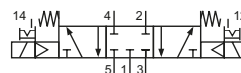
Electrically operated spool valve. The manual override is detent and is operated by screw driver.

5/2-way-valves


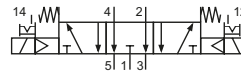
MF-04-510-HN-412
5/2-way, single solenoid, air spring return



MF-24-520-HN-412
5/2-way, double solenoid

5/3-way-valves


MF-24-530-HN-412
5/3-way, center position closed





MF-24-533-HN-412
5/3-way, center position exhausted


Technical data


| Model-no.: | MF-04-510-HN-412 | MF-24-520-HN-412 | MF-24-530-HN-412 | MF-24-533-HN-412 |
|------------------------------------|-------------------|-------------------|-------------------|-------------------|
| Required space | 1 station | 2 stations | 2 stations | 2 stations |
| Operating pressure (bar) | 2.5...8 | 2.5...8 | 3...8 | 3...8 |
| Pilot pressure (bar) | 2.5...8 | 2.5...8 | 3...8 | 3...8 |
| Flow rate (NI/min) | 360 | 360 | 360 | 360 |
| Response time (ms) at 6 bar | on: 13 off: 16 | on: 11 off: 11 | on: 15 off: 22 | on: 15 off: 22 |
| Weight (kg) | 0.112 | 0.230 | 0.232 | 0.232 |

Accessories

| | |
|---|------------------------|
| Model-no.: | RE-04-DT |
|  | Pressure dividing plug |

| | |
|--|-----------------------------|
| Model-no.: | 28-ST-RE-10x-yy |
|  | 19-pin multi plug, straight |
| x = 3 | 3 m cable |
| x = 7 | 7 m cable |
| yy = 8 | up to 8 stations |
| yy = 16 | up to 16 stations |

| | |
|---|-------------|
| Model-no.: | RE-04-V-EP |
|  | Blind plate |

| | |
|--|--------------------------|
| Model-no.: | 28-ST-RE-11x-yy |
|  | 19-pin multi plug, elbow |
| x = 3 | 3 m cable |
| x = 7 | 7 m cable |
| yy = 8 | up to 8 stations |
| yy = 16 | up to 16 stations |